



A Company You Can Trust For Your *"Pollution Solutions"*



281 Hughes Drive • Traverse City, Michigan 49686



## ***20,000 Square Feet of Modern Manufacturing Space***



- **Wegner Butt Welding Machine**
- **Wegener Bandsaw w/ 36" Throat**
- **4' X 8' CNC Router (precision cut parts)**
- **Strip Heater (for bending plastic)**

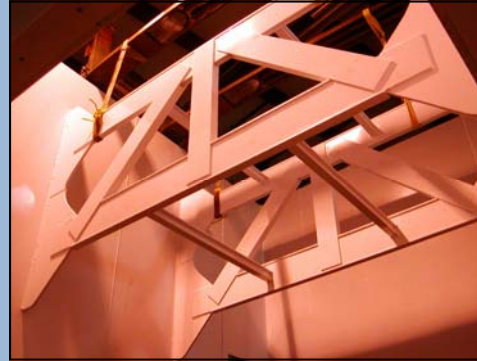
- **Iron Worker**
- **Plate Roll Machine**
- **Vertical Router**
- **Extrusion Welders**





- *Experienced Fabricators*
- *Heat Formed Parts*
- *Superior Construction*

- *Best Quality Available*
- *Right Material For The Job*
- *Professional Installations*





- ***Experienced Installers***
- ***Dependable Transportation Equipment***
- ***Preventative Maintenance Programs***

